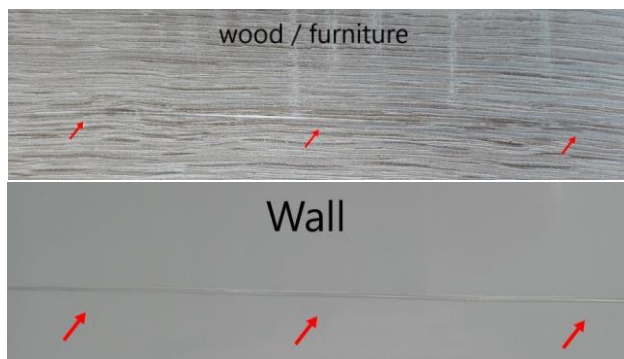
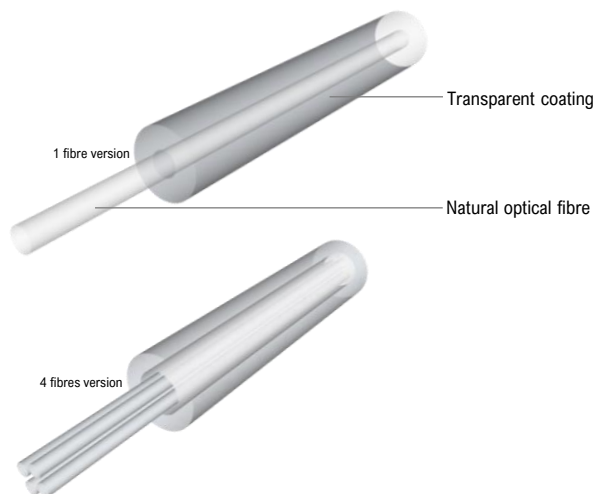


Invisible Cable

Cable with reduced visibility in normal environments. During the normal observation is cable undetectable and does not disturb the appearance of the room where it is installed.



Fibre count	Up to 4
Fibre Type	G.657.A1, G.657.A2, OM1, OM2, OM2+, OM3, OM4, OM5
Fibre colour	Natural
Secondary coating material	UV curable acrylate
Secondary coating colour	Natural

Cable outer diameter	0.9	[mm]	
Max. Loading (Short Term)	10	[N]	EN 60794-1-21-E1
Max. compressive loading 1F	250	[N/10cm]	EN 60794-1-21-E3
Max. compressive loading 2-4F	50	[N/10cm]	EN 60794-1-21-E3
Kink*	5	[mm]	EN 60794-1-21-E10
Min. bend radius not load	10	[mm]	EN 60794-1-21-E11
Operating temperature range	-40 až +80	[°C]	EN 60794-1-22-F1
Storage temperature range	-40 až +80	[°C]	EN 60794-1-22-F1
Cable Weight (calc.) 1F	0.8	[kg/km]	
Cable Weight (calc.) 4F	1.0	[kg/km]	
Class of fire reaction	F _{ca}		EN 13501-6

*Depend on fibre type

Delivery length 2000 m, 4000 m, 8000 m ± 5% m on plastic reel 260 mm (2000m, 4000m) or K355 (8000 m)

Cable Code (Ordering Code)	1F	OPK-U-SPCM-1(1x0.9)FFQ-xx-NT
	2F	OPK-U-SPCM-2(1x0.9)CFU-xx-NT
	4F	OPK-U-SPCM-4(1x0.9)CFU-xx-NT

xx – fiber type (see Cable code datasheet)